



University of Essex

**WE ARE**

**ESSEX**

International Prospectus 2026

# CONTENTS

Our Campuses	3
We Are Essex	4
Colchester Campus	6
Colchester Life	8
Southend Campus	10
Southend Life	12

## **Studying at Essex**

---

Fees And Scholarships	14
Accommodation	16
Facilities	18
Careers	20
Student Support	24
Students' Union	26

## **Our courses**

---

How To Apply	28
Our Courses	31
Important Information	54
Get In Touch	55

# OUR CAMPUSES

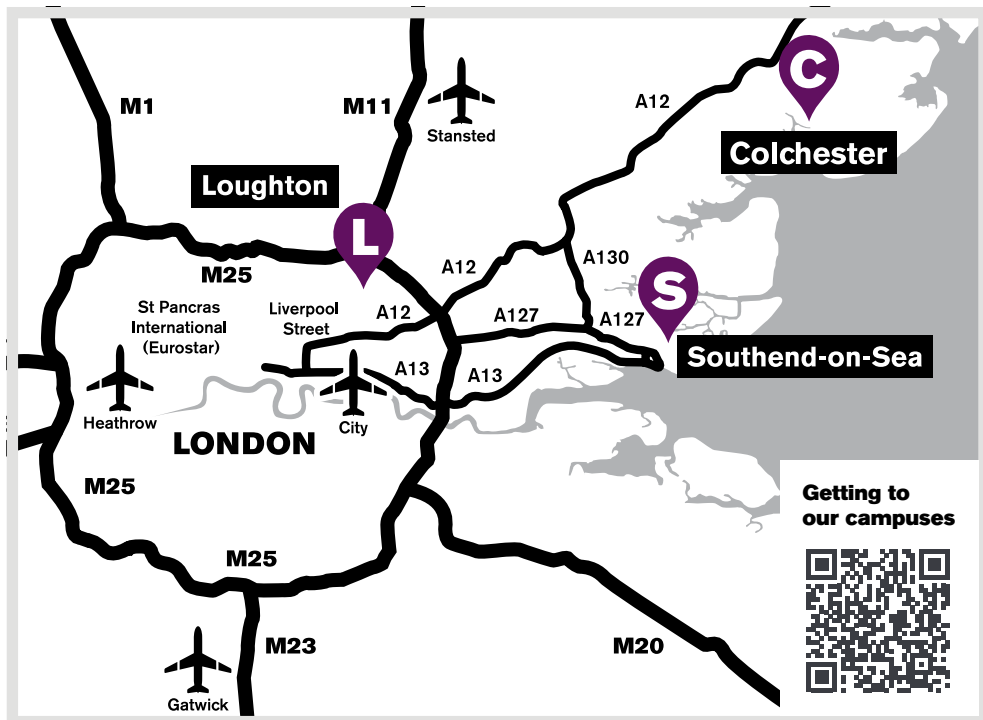
**C** Colchester

**S** Southend-on-Sea

**L** Loughton

The University of Essex is based at three campuses: Colchester, Southend-on-Sea and Loughton. Your course will be based at one campus location. All campuses are located conveniently for London and its airports and other travel connections.

For more information about the Loughton Campus, please visit: [east15.ac.uk](http://east15.ac.uk)



Getting to our campuses



# WE ARE ESSEX

Our students, staff and alumni come from all over the world, each with their own unique story to tell. Here are some stories from our inspirational students.



## **Fernanda – MA Sociology and Management (Mexico)**

**I know this is the place I'm meant to be.**

I always wanted to continue my education. England was my first choice but when I first applied for my Masters I was scared I wouldn't be able to come so I was ok with staying in Mexico as well. But now I'm here I know this is the place I'm meant to be. I find it so encouraging and the international community here is amazing and you learn a lot of things.

## **Muhammad – BSc Accounting and Finance (Malaysia)**

**My parents both cried when I told them I got a first-class degree. Their tears of joy were the best moment for me, I have never felt so much happiness in my life.** I worked a part-time job throughout my degree so that I could save up to pay for my parents to come here for graduation. Time management was always the key for this. I had to make sure my studies and assignments were the priority but I also worked 15-20 hours a week; I needed to make sure that I used my free time wisely, for my study, friends and myself.



**Chat to our students to find out more**



## Mantika – BSc Economics (India)

I am most proud of the person I've become. Throughout this journey, Essex helped shape my personality and being. I've become more courageous, empathetic, and independent. Funnily enough, **I only recently learnt Essex's motto: 'thought the harder, heart the keener', and I think it perfectly sums up my learnings over the past 4 years.** The University of Essex gave me joy, happiness, and an understanding of a truly 'worldwide community'.

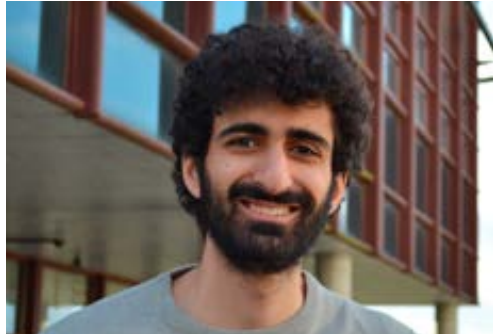


## Angela – BSc Biomedical Science (Nigeria)

**My Essex education has given me determination.** Essex has a buzz – everything happens here, from campaigns for social justice to student socials. My course included lots of opportunities to work with others and the campus has great spaces for collaboration.

## Loay – BSc Electronic Engineering (Jordan)

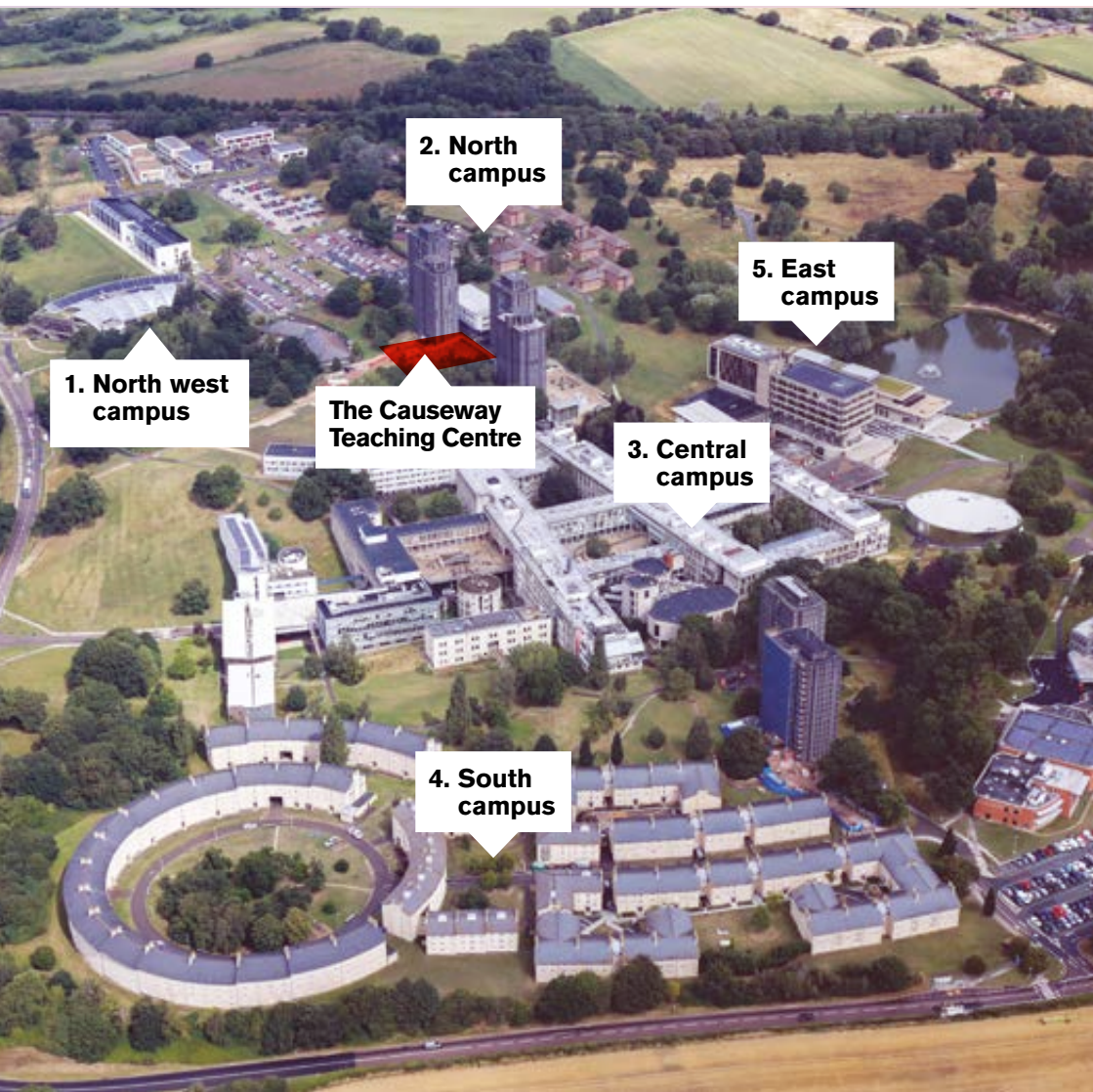
If someone's coming here for the first time, I would say try and do what I did, which is **immerse yourself as much as you can into the culture.** Go out, go to different societies or sports clubs, go to socials, just meet as many people as you can and find what you like! I always want to try to experience everything at least once. I want to live, I want to explore, learn as much as possible, experience whatever I can, go travelling, and just live life to the fullest.

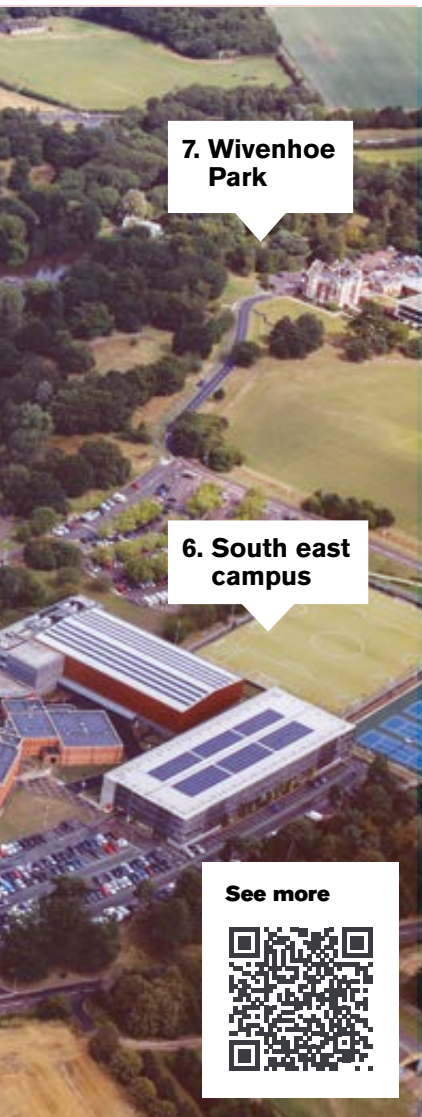


## Antonio – BA Philosophy and Politics (Portugal)

I ended up going on a Year Abroad to Tokyo. I've always wanted to go to Asia. I really enjoyed coming to Essex. I had no connections at the University: **I wanted to get out of my shell and meet new people.** During Freshers' Week I didn't know anyone, so I came down to the SU Bar, grabbed a drink and found someone to speak to. That is how I met one of my closest friends.

# COLCHESTER CAMPUS





### 7. Wivenhoe Park

### 6. South east campus

See more



## 1. North west campus

- Accommodation – The Copse, The Meadows, The Pastures, The Quays
- Essex Business School
- Day Nursery
- Knowledge Gateway and Innovation Centre

## 2. North campus

- Accommodation – North Towers, The Houses, Wolfson Court
- Health Centre
- Teaching Centres

## 3. Central campus

- Lecture Theatre Building
- Academic departments
- Lecture and seminar rooms
- Students' Union
- Bars, cafés and restaurants
- Shops
- Faith Centre

## 4. South campus

- Accommodation – South Towers, South Courts
- STEM Centre

## 5. East campus

- Ivor Crewe Lecture Hall
- Silberrad Student Centre
- SU Creative Studios
- Albert Sloman Library
- Lakeside Theatre and Café
- Parkland and lakes

## 6. South east campus

- Essex Sport Arena
- Sports Centre and Gym
- Synthetic turf pitch
- Tennis courts

## 7. Wivenhoe Park

- Wivenhoe House Hotel
- Edge Hotel School
- Essex Collection of Art from Latin America (ESCALA)
- Campus allotment
- Sports pitches and parkland

# COLCHESTER LIFE



**“ Essex was the perfect choice for me as Colchester is only a 50-minute train ride from the centre of London and an hour from Stansted airport, where I can get a flight directly to my hometown. Another influential reason for choosing Essex is because it is a campus university and has everything I need on site. ”**

Effie Lunde, BSc Management and Marketing student, Norway

Find out more  
about Colchester



**The Colchester Campus is based in 200 acres of parkland close to the city centre. It offers extensive study, sports and social facilities as well as medical and support services to ensure you achieve the most from your studies. Located under an hour from London, Colchester is a great student city, offering a mix of shops, restaurants, theatres and music venues. It also has a rich history as the UK's first capital, with Roman settlements found all around the city.**

## **Food and nightlife**

---

Colchester's Culver Square and Lion Walk are home to a fantastic range of familiar shops and high-street fashion. What makes our city really distinctive are all of the specialist and unique shops on offer. Stroll down Sir Isaac's Walk or Eld Lane, two of the quirkiest streets in the city centre, and you'll find a mixture of retro clothing boutiques, old-school sweet shops, tea rooms, jewellers, and international food stores.

There's a wide range of restaurants with student-friendly prices offering local and international cuisines.

Colchester also has a great selection of bars, pubs, cafés, nightclubs, visual and performing arts and live music venues to cater for all tastes.

On campus, you'll find a range of food options, with a great selection of halal, vegan and vegetarian dishes and groceries available, as well as a range of entertainment options.

## **Location and travel**

---

Colchester is under an hour away from all the attractions of London, and has good connections for both the UK and abroad. We're an hour away from London Stansted Airport which offers low-cost flights to many European and Middle East destinations, and London's other airports are also easily accessible by public transport.

## **Things to see and do**

---

The Colchester Castle and its museum offer a great introduction to the city's Roman and Norman history.

Mersea Island, less than an hour from campus, offers some of the tastiest seafood around, including the famous Mersea oysters.

Colchester Zoological Society is home to a huge range of species and offers a great day out close to the city centre.

# SOUTHEND CAMPUS





**7. Clifftown Theatre**

**See more**



## **1. The Forum**

- The Learning Hub
- Student Services
- Public and academic library
- Lecture and seminar rooms

## **2. The Gateway Building**

- Academic departments
- Lecture and seminar rooms
- Students' Union lounge
- Faith Centre

## **3. Southend Central Station**

- Connections to Leigh-on-Sea, London and Lakeside Shopping Centre

## **4. University Square Accommodation**

- Supermarket
- International shops

## **5. High Street**

- Cinema
- Cafés and restaurants
- Post Office
- Chain stores and independent shops

## **6. Southend Victoria Station**

- Connections to Colchester, London and Southend Airport

## **7. Clifftown Theatre**

- East 15 Acting School
- Prittlewell Square Gardens
- The Railway Hotel music venue

## **8. Southend Victoria Station**

- Southend Pier
- Adventure Island amusement park
- Beach and promenade

# SOUTHEND LIFE



Find out more  
about Southend



**Our campus in Southend-on-Sea is located in the heart of the city and surrounded by all of its facilities.**

## **Sports, arts and leisure**

---

If you like to be active you can take advantage of Southend's great location with sailing, windsurfing, jet skiing and canoeing all available on the seafront. There is a thriving live music and arts scene, with two theatres, numerous art galleries, and festivals throughout the year. If food is your thing, you are spoiled for choice with hundreds of places to dine, from independent Portuguese and Thai restaurants to popular franchise outlets.

## **Location**

---

Southend-on-Sea's location means there's plenty to see and do. Well-known attractions abound, from Adventure Island amusement park and arcades to the famous Rossi ice-cream parlour.

Southend is also a great gateway: London is just 45 minutes away by train, while London Southend Airport is only three miles from campus, offering flights to European destinations.

## **Our campus**

---

Our Southend Campus offers modern learning and teaching spaces. The Forum building has a library, gallery and café. It also houses our Learning Hub, plus all of our student support services in one place.

Our Learning Hub is open 24 hours a day. With quiet reading spaces and technology-driven group working pods, there are a range of diverse spaces, each dedicated to a different style of learning and studying. The Gateway Building houses more teaching facilities as well as our Faith Centre.

The Students' Union organises and facilitates activities and sports in Southend, from yoga lessons to nights out. You can also enjoy the SU Lounge venue, with comfortable sofas, game consoles and board games to keep you entertained.

---

**“ During my time here, Southend has offered opportunities to learn and excel academically and professionally – as well as a great student experience. With a small and diverse student community it is easy to get to know each other, access support services and meet with your academics. Throughout the year we have BBQs, parties, fireworks, cultural celebrations, live entertainment, inspirational guest speakers and competitions. Without any doubt, I'd recommend Southend as your place of study. ”**

**Ernest Nyarko, previously Students' Union Vice-President Southend**

# FEES AND SCHOLARSHIPS



## University of Essex scholarships 2026-27

Award	Amount	Eligibility	Website
Regional and country-specific scholarships – undergraduate and postgraduate awards	Varying amounts worth up to 50% of tuition fee	Awards are available for students from various regions and backgrounds. Please see website for details and further eligibility criteria	<a href="https://essex.ac.uk/scholarships">essex.ac.uk/scholarships</a>
International Baccalaureate Excellence Scholarship	£2,000	Students achieving 34 points or more in the International Baccalaureate	<a href="https://essex.ac.uk/scholarships">essex.ac.uk/scholarships</a>
Academic Excellence International Masters Scholarships	Varying amounts	Please see website for details	<a href="https://essex.ac.uk/scholarships">essex.ac.uk/scholarships</a>
University of Essex Doctoral Scholarships	Varies by department and scheme	Please visit the website for full criteria	<a href="https://essex.ac.uk/postgraduate/research/fees-and-funding">essex.ac.uk/postgraduate/research/fees-and-funding</a>
Sports Scholarships	Up to 100% of tuition fees	Talented athletes playing at regional, national or international level	<a href="https://essex.ac.uk/scholarships/sports-scholarships-and-bursaries">essex.ac.uk/scholarships/sports-scholarships-and-bursaries</a>
Loyalty discounts	Up to 33% of tuition fees	Graduates from Essex Bachelors, Masters and Graduate Diploma courses and former study abroad students	<a href="https://essex.ac.uk/scholarships/alumni-loyalty-discount">essex.ac.uk/scholarships/alumni-loyalty-discount</a>

When you come to study with us, we understand that you are making a significant investment of time and money, so we want to make sure it pays off. We're here to support your future success.

Find out more about our scholarships



### International (including EU) fees for academic year 2026-27

Undergraduate – by department	Fee
Edge Hotel School; Languages and Linguistics; Literature, Film and Theatre Studies; Psychosocial and Psychoanalytical Studies; Philosophical, Historical, and Interdisciplinary Studies; Sociology and Criminology, Health and Social Care	£21,500
East 15; Essex Business School; Law and Human Rights; Economics; Government; Mathematics, Statistics and Actuarial Science; Sports, Rehabilitation and Exercise Sciences	£22,600
Life Sciences; Psychology	£24,360
Computer Science and Electronic Engineering	£25,050

Postgraduate taught – by department / programme	Fee
Law; Literature, Film and Theatre Studies; Philosophical, Historical, and Interdisciplinary Studies; Life Sciences; Health and Social Care; Mathematics, Statistics and Actuarial Science; Psychology; Sports, Rehabilitation and Exercise Sciences; Government; Languages and Linguistics; Psychosocial and Psychoanalytical Studies; Sociology and Criminology; Edge Hotel School	£23,875
MSc Tropical Marine Biology; Computer Science and Electronic Engineering; Essex Business School; Economics	£24,675
East 15 (Acting)	£22,350
The Essex MBA	TBC
Graduate Diploma	TBC

Postgraduate research	Fee
Non-lab-based	£20,625
Lab-based	£23,625

For undergraduate students and postgraduate students on courses with a duration of more than one year with an international fee status, tuition fees normally increase for each academic year of study. This annual increase will be 5% or the annual increase in the RPI-X index, whichever is higher. Find out how we use your fees:

[essex.ac.uk/using-your-fees](https://www.essex.ac.uk/using-your-fees)

A number of external scholarships and awards are also available. Please visit [essex.ac.uk/scholarships](https://www.essex.ac.uk/scholarships) for further information.

# ACCOMMODATION

Accommodation is guaranteed for international students studying on our Colchester and Southend Campuses for the duration of their degree. Catering plans are also available.

## South Courts

Cost per week: £101.78 – £206.17

**Location:** Colchester Campus

4-14 rooms per flat, en suite facilities, some adapted rooms available, home to our Athletes Village

\*twin sharing room per person



## The Towers

**Cost per week:** £126.42 – £245.63\*

**Location:** Colchester Campus

13-16 rooms per flat, shared showers and toilets, 2 minute walk to central campus

\*self-contained apartment

## The Meadows

**Cost per week:** £199.36 – £250.18

**Location:** Colchester Campus

12 rooms per townhouse with lounge/kitchen, 5-7 rooms per flat with shared kitchen, self-contained apartments available



### Find out more

These figures show the current cost per week of our accommodation. It's likely that our rental charges for 26-27 will increase from these current prices. We'll publish the new prices on our website as soon as they are available. Accommodation rates in Colchester also include an Essex Sport Silver membership.



## Wolfson Court

**Cost per week:** £137.83 – £146.44

**Location:** Colchester Campus

7 rooms per flat, shared bathroom facilities



## University Quays

---

**Cost per week:** £190.47 – £272.51

**Location:** Colchester Campus

4-8 rooms per flat, en suite facilities, 15 minute walk to central campus, double rooms and self-contained apartments available



## The Houses

---

**Cost per week:** £101.78\* – £196.84

**Location:** Colchester Campus

4-6 rooms per flat, en suite facilities, some adapted rooms available

\*twin sharing room per person

## The Copse

---

**Cost per week:** £212.87 – £249.69

**Location:** Colchester Campus

4-12 rooms per flat, en suite facilities, studio flats also available



## The Pastures

---

**Cost per week:** £178.64 – £251.79

**Location:** Colchester Campus

En-suite and shared bathroom flats and studio flats available

## University Square

---

**Cost per week:** £165.48 – £225.75

**Location:** Southend Campus

11 rooms per flat, en suite facilities, studio flats have own kitchenette, some adapted rooms available



# FACILITIES



We're investing in your campus experience to make sure you've got amazing spaces to learn, live and relax.

Find out more about student facilities at Essex



## Sports facilities

- Our **Essex Sport Arena** has 1,655 seats and can host televised sporting events. The Arena contains eight badminton courts, three basketball courts, three netball courts, five volleyball courts and two futsal courts. The Sports Centre next door includes a modern gym, fitness studios and even a climbing wall.

## Arts and theatre

- The **Lakeside Theatre** on our Colchester Campus, the **Corbett Theatre** in Loughton, and the **Clifftown Theatre** in Southend host student and professional productions. Whether you're a keen actor, interested in production, or just enjoy an evening at the theatre these provide an excellent creative space for students with an interest in the arts. There is also an art gallery on the Colchester Campus.

## Study and learning spaces

- The **Forum Learning Hub** in Southend is open 24 hours a day and offers a range of diverse spaces for study and group work. In the Forum you'll also find our large lecture theatre, a café and our friendly support services all under one roof.
- The **Silberrad Student Centre** has 24/7 access to a combination of IT-rich areas and study pods for group work. The Centre is also home to our Student Services Hub – your one-stop-shop for finance and support services.
- The **STEM Centre** on our Colchester campus includes a 180-seat wet lab for our School of Life Sciences and a 150-seat IT-rich exploratory learning space to enable collaboration between students across our Faculty of Science and Health.
- The **Forum library** in Southend is a vibrant contemporary space with outstanding learning facilities and a central location. The **Albert Sloman library** in Colchester houses some of the UK's finest collections, providing fascinating insight into Latin America, Russia and Eastern Europe.
- We have one of the world's leading **robotics research facilities**, housing robotic wheelchairs, spiders, dogs, football players, fish and robotic aircraft, which you can often see flying around the arena!

- **Essex Business School** in Colchester is a zero carbon building, with a winter garden, café and lots of space for group discussions.

# CAREERS



Find out more  
about careers  
support at Essex



We encourage you to make the most of your time at university and support your career goals with our innovative For All offer and Preparation Programmes.

## Enhance your career prospects

---

Our courses are designed to equip you with a range of transferable skills and experiences which will help you head start your career. All of our undergraduate degrees include a module on employability, with special emphasis on your area of study.

## Preparing you for success

---

We'll support your success even before you arrive on campus, with free academic skills programmes which will help you be prepared from the very start of your course at Essex.

For those joining us at undergraduate level, there's the Essex Preparation Programme, and the Masters Preparation Programme and Masters Skills Programme are designed for new postgraduate taught students.

## Essex for All

---

We offer short courses to all students at no additional cost to boost your skills and expand your knowledge on issues that matter to you. These courses are unique to Essex among all UK universities and will give you a competitive boost in the job market. The courses offer opportunities to learn languages, get to understand community organising and increase your knowledge around health and wellbeing.

[essex.ac.uk/life/for-all](https://essex.ac.uk/life/for-all)

## The Big Essex Award

---

Our Employability Award lets you gain recognition for extra-curricular activities, which will then be recorded in your undergraduate HEAR (Higher Education Achievement Record), or the postgraduate FAR (Further Achievement Record). There are four levels to the award so you'll have a chance to work through the levels during your time at Essex and really impress your future employers.

Activities that may count towards your Big Essex Award include part-time work, volunteering through the Students' Union vTeam, language learning through Languages for All, having an executive role in a student society or sports club, becoming a course representative, and more.

[essex.ac.uk/student/careers/the-big-essex-award](https://essex.ac.uk/student/careers/the-big-essex-award)

## Employability workshops

---

Our workshops and webinars will help you successfully apply for work, both during and after your studies. Training includes help with creating the perfect CV, tips on how to excel at interviews and guidance on delivering a professional presentation. Training is also available on how to make the most out of networking and LinkedIn. Employers and employer organisations also offer talks on how to prepare for a career or training opportunities in their field.

[essex.ac.uk/careers](https://essex.ac.uk/careers)

**86%** of our graduates are in employment or further study (Graduate Outcomes 2024)



## Study abroad opportunities

---

Most of our undergraduate courses offer study abroad opportunities. We have relationships with over 150 institutions in 40 countries worldwide.

[essex.ac.uk/essexabroad](https://www.essex.ac.uk/essexabroad)

## International networks

---

We have established partnerships with universities from all around the world, to maximise the mobility and employability of our graduates. You can find out more about the partnerships in your region on our country webpages. You can also find out more about the European YUFE and YERUN partnership networks online.

[essex.ac.uk/international](https://www.essex.ac.uk/international)

## Gain real-life experience

---

There are a number of ways in which you can gain wider experience during your studies

at Essex. Our CareerHub job listings board lists vacancies for a range of part-time work opportunities, both on and off campus, including our Essex Interns student internship programme, work in the Students' Union venues and services, opportunities to work as a Student Ambassador or Residence Life Assistant, and a whole range of jobs available through local businesses and organisations. You can also use CareerHub to search for full-time graduate jobs.

## Work placement as part of your studies

---

In most degree subjects we offer the opportunity for you to include a work placement year as part of your undergraduate degree – this will usually be a year-long paid work placement in industry, relevant to your field of study. We also offer Masters programmes with a Professional Placement in selected subjects.

[essex.ac.uk/careers/placements](https://www.essex.ac.uk/careers/placements)

[essex.ac.uk/masters/](https://www.essex.ac.uk/masters/)

[masters-with-professional-placements](https://www.essex.ac.uk/masters-with-professional-placements)

# Immigration limitations on working in the UK during your studies

Depending on the type of immigration permission you have for your studies in the UK, you may be able to work during your studies. Details of any limitations will be shown on your immigration permit. For details on working with a Student visa, see the UKCISA website:

[ukcisa.org.uk/Information--Advice/Working/Student-work](https://ukcisa.org.uk/Information--Advice/Working/Student-work)

## Alumni success

Our amazing alumni have gone on to make inventions, change the world, win prestigious British Council alumni awards, and make an impact in their communities. Find out more about our inspiring alumni:

[essex.ac.uk/alumni/inspiring](https://essex.ac.uk/alumni/inspiring)

## Graduate immigration route

The graduate route allows eligible graduates to remain in the UK to work, or look for work, after completing their course. This will

allow eligible graduates to gain valuable post-graduation work experience in the UK, and it may also be possible to transfer to another work route if you find suitable employment. Find out more:

[ukcisa.org.uk/Information--Advice/Working/Graduate-route](https://ukcisa.org.uk/Information--Advice/Working/Graduate-route)

## Here for you

Our Student Development Careers Services offer dedicated international careers advice and support available during your studies and after you graduate, helping you look for graduate-level work both in the UK and abroad and bringing you together with potential employers at careers events. The team organise a large annual Career Fair, as well as subject-specific events, to help you meet potential employers right on campus. Their resources also include access to local, national and international job listings, such as GradLink UK.

## Startup support

The Essex Startups team offer a wide range of training, support and funding opportunities to those interested in starting a business, both during their study and up to three years after graduation (subject to immigration permission).

[essex.ac.uk/student/careers/support-with-starting-your-own-business](https://essex.ac.uk/student/careers/support-with-starting-your-own-business)

### Recent graduate employers

- Amnesty International
- Barclays
- Bloomberg
- BP
- Cancer Research UK
- Citi
- Credit Suisse
- Deloitte
- Fujitsu
- GlaxoSmithKline
- Goldman Sachs
- Intel
- KPMG
- Microsoft
- Ministry of Foreign Affairs, Qatar
- Morgan Stanley
- Procter & Gamble
- Panasonic
- PriceWaterhouseCoopers
- Shell
- The Royal Shakespeare Company
- United Nations
- United Overseas Bank (UOB), Malaysia

# STUDENT SUPPORT



Find out more  
about support  
services at Essex



We provide a range of support services to make sure that you get the help and guidance you need during your time at Essex. This includes academic skills support, mentoring and health and wellbeing services.

## Welfare and support

---

As an international community we understand the needs and concerns of international students, and do our best to provide you with excellent support facilities.

Our support and welfare services include healthcare, immigration advice, support with your faith and assistance with improving your academic skills, as well as places you can go if you just need to talk to someone.

## Support and guidance

---

### Student Services Hubs

Our Student Services Hubs can help with general wellbeing and funding advice. We also have facilities and advice available for students with disabilities and those struggling with issues like settling in and exam anxiety.

### Immigration

UK immigration advice is regulated, so can only be provided by our authorised advisers. Please visit [essex.ac.uk/international/immigration-and-visas](https://www.essex.ac.uk/international/immigration-and-visas) for further information.

## Support with your studies

---

You may find studying at a UK university very different to your home country, and it may be the first time you'll be studying in English. We aim to ensure that you can get the most out of your education by providing a range of academic and English language support classes.

### Mentoring

Our academic departments also provide their own support services, with most departments running student mentoring schemes, and our lecturers and professors offering office hours for one-to-one guidance with your studies.

## Health and wellbeing

---

### Health services

There is a health centre on our Colchester Campus which offers appointments with male and female doctors, as well as specialist services and counselling. It is important to register with the health centre as soon as you can so that you can receive treatment when you need it.

### Religious life

Our Faith Centre is for all members of the University community. We offer on-campus pastoral care, a confidential listening ear and spiritual support. We also offer a safe place to practise or explore faith, either in the Centre or by connecting you to a local place of worship.

## Students with families

---

It is important that you're aware of the additional costs and implications of bringing your family with you to the UK.

Please visit our website for further information for students with dependants. If your family will need dependants visas we recommend you check the Home Office criteria to see if they would be eligible to apply.

To find out more about the Wivenhoe Park Day Nursery on the Colchester Campus, including costs, please visit [wivenhoeparkdaynursery.co.uk](https://www.wivenhoeparkdaynursery.co.uk)

It is important to complete the application process if you require a nursery space.

# STUDENTS' UNION

WE WANT  
TO BE THE  
WORLD'S  
MOST  
STUDENT-  
CENTRED  
ORGANISATION

Find out more  
about the SU  
at Essex



Studying at the University of Essex means being part of our award-winning Students' Union. Here's what makes it stand out.

**“ I think a lot of people see the Students’ Union as a means to having a good time, which of course it is, but it’s also so much more than that. Being able to work towards tackling the issues that students care about, like cost of living, accommodation and mental health, really makes it worthwhile. The SU belongs to all students, and they’re empowered to make change within it. Without students, the University wouldn’t be here. ”**

Tancrede Chartier, France, former Students’ Union President

---

Across all three campuses the Students’ Union (also known as the SU) helps to make sure you get the most out of your time at Essex. From social spaces and welfare support to supporting clubs and societies and providing student voice – they are there for you.

## **Clubs and societies**

---

Our Students’ Union offers membership to over 100 societies. You can meet people on campus before you join the University through social media, and meet representatives from the different societies during Welcome Week on campus.

You can find all current societies on the SU website and if you don’t find one that suits you, you can set one up once you arrive. [essexstudent.com/societies/findasociety](https://essexstudent.com/societies/findasociety)

## **An international community**

---

Our students come from over 130 different countries and the SU promises to support all students. There are over 30 different cultural societies where you can meet other students from your country or explore other cultures. We also have the International Students’ Association (ISA) who celebrate and promote cultural

diversity on campus, and represent our international students’ interests through the SU VP International role.

## **Stay active**

---

There are over 40 sports teams, including football, cricket and basketball as well as some sports you may have never tried before like fencing or yoga.

## **What’s on**

---

We’ll make sure you’re never bored at Essex with activities day and night to keep you occupied. Our cinema shows the latest films, we have quizzes in the SU Bar, open forums for heated debates and so much more.

## **Shape everything**

---

Students run the SU. You get to have your say and make an impact on life on campus. Whether it’s about what gets stocked in our stores, requesting more food options on campus or what we campaign for together. Whatever you want to do, we’re here to make it happen. Nothing is too big or too small.

# HOW TO APPLY



## Useful information about the application process.

### Applying

#### For undergraduate degrees

We welcome online applications for our undergraduate degrees. There are two application routes:

UCAS. Our UCAS institution code is E70.  
[ucas.com](https://ucas.com)

Or, if you only want to apply to the University of Essex and do not plan to make a UCAS application, you can apply to us directly through our free online application form.  
[essex.ac.uk/direct](https://essex.ac.uk/direct)

Either application route will ask for details of your qualifications, both those you may have already achieved and those that may be pending in the current year. If you do decide to apply directly to the University of Essex you can upload documents to support your application such as certificates or transcripts. Both application routes allow you to save and return to your application if you need to.

Find out how to  
apply to Essex



## For postgraduate taught (PGT) degrees

We welcome online applications for our Masters degrees.

[essex.ac.uk/masters/applying-to-essex](https://essex.ac.uk/masters/applying-to-essex)

Our free online application form takes about 20 minutes to complete and you can save and return to it if you need to. Your supporting documents must include transcripts of your university-level studies to date and any other items which your department requires.

If you are offered a place on a taught course, your offer may be made conditional upon additional documents such as proof of English language proficiency, final transcript and degree certificates. References are only required for a small number of courses as listed on the application webpage. Full details, including where to send information, are available online through the link above.

## For postgraduate research (PGR) degrees

We welcome online applications for our research degrees.

[essex.ac.uk/postgraduate/research/applying-to-essex](https://essex.ac.uk/postgraduate/research/applying-to-essex)

You will need to submit a research proposal, which includes:

- a working title and key words
- a summary of the aims and objectives of your research
- an outline of the ways you will meet these aims and objectives, referring to research methods and specific resources you will use
- evidence of your awareness of relevant literature and theoretical approaches
- an overview of the expected outcomes and the original contribution your research will make to existing bodies of knowledge
- a brief statement on how your research interests tie in with those found in the department, school or centre

You must also provide transcripts of your university-level studies to date.

If you are offered a place on a research course, your offer may be made conditional upon additional documents such as proof of English language proficiency.

# General entry requirements

## Undergraduate

Entry requirements vary by course, with many courses requiring A-level grades between BBB-BBC or IB 30-29, depending on the subject area. Please check the requirements, and details of any subject-specific requirements that may be needed, for your chosen course on our webpages.

[essex.ac.uk/subjects](https://essex.ac.uk/subjects)

International equivalents are available on our region specific webpages.

[essex.ac.uk/international/country-specific-information](https://essex.ac.uk/international/country-specific-information)

If you do not meet these requirements, you may be able to join a pathway programme at the University of Essex International College, please see the course section in this prospectus for further details.

Some courses will have additional application requirements as part of the application process, such as auditions for East 15 acting courses or interviews for courses within Health and Social Care or Physiotherapy. Please visit our online course finder linked above for further information.

## Postgraduate taught courses (PGT)

Requirements vary by department, with most departments requiring 2:2 or above, or equivalent international qualifications. For some courses there may be additional requirements.

## Postgraduate research degrees (PGR)

You will normally need a good performance in a Masters course in order to study a PhD in most disciplines.

A well-developed research proposal is required, in an area in which we can offer supervision.

## English language requirements

If English is not your first language, you need to provide evidence of your ability to understand and express yourself in English for academic purposes.

Most undergraduate courses require the equivalent of Academic IELTS 6.0 overall, with 5.5 in each component, for first year entry. To view our requirements for other tests, please visit our website through the link below.

Most postgraduate taught courses require the equivalent of Academic IELTS 6.0 – 7.0 overall, with at least 5.5 in each component, depending on the course. For individual course requirements, and to view requirements for other English language tests, see our course finder and the link below.

If you have a score which is less than five years old in an internationally recognised test, such as Academic IELTS, please supply your results on your application (undergraduate) or a copy of your certificate with your application (postgraduate). Pearson Test of English scores must be less than three years old and TOEFL test scores must be less than two years old. Other tests or qualifications may be accepted, please visit our website for further details:

[essex.ac.uk/undergraduate/  
applying-to-essex](https://www.essex.ac.uk/undergraduate/applying-to-essex)

[essex.ac.uk/masters/  
applying-to-essex](https://www.essex.ac.uk/masters/applying-to-essex)

If you do not have a current or acceptable score, your offer will be conditional upon you achieving an acceptable English language qualification.

The English language score required will vary by level of study and subject, please see our online course finder for requirements: [essex.ac.uk/subjects](https://www.essex.ac.uk/subjects)

Students who need a student visa to study in the UK must also meet the Home Office minimum English language requirements, including any component requirements.

If you do not meet the English language requirement for your course we offer pre-sessional English courses in partnership with University of Essex International College, please see [essex.ac.uk/international/pre-sessional](https://www.essex.ac.uk/international/pre-sessional) for further information.

## Personal statements

Due to Home Office requirements, please ensure your personal statement makes it clear why you wish to study in the UK and why you've chosen the subject you are applying for. You should also tell us about your full academic history including any periods of time spent studying in the UK. If you have spent any time out of education, please also let us know what you were doing during this time.

## Immigration and applying for a visa

Our admissions team will assess whether you're likely to need a student visa for your studies at Essex. If immigration permission is required, the team will send you further information on applying through the Student Immigration route. You can find out more about the application process and requirements on our immigration webpages.

The Graduate Immigration Route allows eligible graduates to remain in the UK to work or look for work after completing their course. You can find out more about the Graduate Immigration Route on the UKCISA website: [ukcisa.org.uk/Information--Advice/  
Working/Graduate-route](https://www.ukcisa.org.uk/Information--Advice/Working/Graduate-route)

**OUR**

# **COURSES**



## **Why Essex?**

---

We're 25th in the UK for student experience (The Times and Sunday Times Good University Guide 2025)

---

We're ranked top 30 in the Complete University Guide 2026

---

We're the number one University in the UK for Knowledge Transfer Partnerships

---

Four of our subjects are in the UK top 10 for research quality (REF 2021)

---

**Find out more about our courses**



# Acting (East 15)

- We are ranked 8th in the UK for drama (Guardian University Guide 2025)
- Our Loughton Campus includes state-of-the-art studios, technical equipment and an innovative theatre space. It is located just five minutes from a London Underground station

## Undergraduate

- BA Acting (L)
- BA Acting (International) (L)
- BA Acting and Contemporary Theatre (L)
- BA Acting and Fight Performance (S)
- BA Acting and Community Engagement (S)
- BA Acting and Physical Theatre (S)
- BA Stage Management (L)
- BA Creative Producing (Theatre and Short Film) (S)
- BA World Performance (S)
- Cert HE Acting for Stage and Screen (L) (S)

## Postgraduate

- MA Acting (L)
- MA Acting (International) (L)
- MFA Acting (International) (L)
- MA Theatre Directing (L)
- MFA Acting with Digital Media (L & S)
- MFA Theatre Directing (L)
- PhD Drama and Performance
- PhD Drama and Performance (Practice as Research)

### Entry requirements

Auditions or interviews will be required. Please visit the department's website for further information about audition and interview dates in your country and online auditions.

### Tuition fees:

- Undergraduate: £22,600
- Masters: £TBC (Theatre Directing) / £22,350 (Acting)
- Research: £20,625

[east15.ac.uk](http://east15.ac.uk)

## Key (Available course options)

C	S	L	+	*
Colchester Campus	Southend Campus	Loughton Campus	This course has an optional year abroad variant	This course has an optional placement year variant

## FIND OUT MORE



# Computer science and electronic engineering

- We're top 250 for Computer Science in the THE World University Rankings by Subject 2025
- You can gain professional IET and BCS accreditation with some courses

## Undergraduate

BSc Artificial Intelligence <sup>+</sup>\*

BSc Computer Science <sup>+</sup>\*

BSc Computer Games <sup>+</sup>\*

BEng Computer Systems Engineering <sup>+</sup>\*

BEng Electronic Engineering <sup>+</sup>\*

BEng Communications Engineering <sup>+</sup>\*

BEng Neural Engineering with Psychology <sup>+</sup>\*

BEng Robotic Engineering <sup>+</sup>\*

BEng Mechatronic Systems <sup>+</sup>\*

## Postgraduate

MSc Advanced Computer Science

MSc Artificial Intelligence (January entry available)

MSc Applications of Artificial Intelligence (January entry available)

MSc Computer Engineering

MSc Financial Technology (Computer Science)

MSc Intelligent Systems and Robotics

MSc Cyber Security

MSc Electronic Engineering

MSc Computer Networks and Security

MSc 5G and Emerging Communication Systems

MSD, MPhil, PhD Computational Finance

MSD, MPhil, PhD Computing and Electronic Systems

MSD, PhD Artificial Intelligence

MSD, MPhil, PhD Computer Science

MSD, MPhil, PhD Electronic Systems Engineering

(Integrated) PhD Engineering

### Tuition fees:

- Undergraduate: £25,050
- Masters: £24,675
- Research: £20,625

[essex.ac.uk/csee](https://www.essex.ac.uk/csee)

# Economics

- Ranked top 175 for Business and Economics (THE World University Rankings by Subject 2025)

## Undergraduate

BA Business Economics <sup>+</sup>\*

BA, BSc Economics <sup>+</sup>\*

BA, BSc Management Economics<sup>+</sup>\*

BA, BSc Financial Economics <sup>+</sup>\*

BA Financial Economics and Accounting <sup>+</sup>\*

BSc Economics with Data Science <sup>+</sup>\*

MEcon Economics (4 year Integrated Masters) <sup>+</sup>\*

MEcon Financial Economics (4 year Integrated Masters) <sup>+</sup>\*

MEcon International Economics (4 year Integrated Masters) <sup>+</sup>\*

MEcon Management Economics (4 year Integrated Masters) <sup>+</sup>\*

## Postgraduate

MA Economics

MSc Behavioural and Experimental Economics

MSc Financial Economics and Accounting

MSc Economics with Data Science

MSc Economics

MA Economics with Public Policy

MA, MSc Financial Economics

MSc Financial Technology (Economics)

MA International Development

MSc Economics of Business and Management (January entry only)

MA, MSc Management Economics

Graduate Diploma in Economics

MSc Quantitative International Development

MRes Economics

MPhil, PhD Economics

### Tuition fees:

- Undergraduate: £22,600
- Masters: £24,675
- Research: £20,625

[essex.ac.uk/economics](https://www.essex.ac.uk/economics)

# Edge Hotel School

- We're ranked 14th in the UK for Hospitality (Guardian University Guide 2025)

## Undergraduate

BA Hospitality Management +

BA Events Management +

BA International Tourism Management +

## Postgraduate

MSc International Events Management (January entry available)

MSc International Hospitality Management (January entry available)

MSc International Tourism Management (January entry available)

PhD Tourism, Hospitality and Events

### Tuition fees:

- Undergraduate: £21,500
- Masters: £23,875
- Research: £20,625

[essex.ac.uk/departments/edge-hotel-school](http://essex.ac.uk/departments/edge-hotel-school)

# Essex Business School

- The Essex MBA is AMBA accredited and generous scholarships are available for applicants to this programme
- Ranked top 175 for Business and Economics (THE World University Rankings by Subject 2025)

## Undergraduate

BSc Accounting +\* (C)

BSc Accounting and Finance +\* (C)

BSc Banking and Finance +\* (C)

BSc Finance +\* (C)

BSc Finance and Management +\* (C)

BSc Business and Human Resource Management +\* (C)

BSc Business Management +\* (C)

BA Business Management and Modern Languages (C)

BSc International Business and Entrepreneurship +\* (S)

BSc International Business and Finance +\* (S)

BSc Marketing Management (C)

BBA Business Administration +\* (S)

## Key (Available course options)

C	S	L	+	*
Colchester Campus	Southend Campus	Loughton Campus	This course has an optional year abroad variant	This course has an optional placement year variant

**FIND OUT MORE**



## Undergraduate

BSc Business Administration and Supply Chain Management <sup>+</sup> (S)

BSc Business and Analytics <sup>+</sup> (S)

BSc Marketing <sup>+</sup> (S)

MAcc Accounting and Finance (4 year Integrated Masters) <sup>+</sup> (C)

MMan Marketing and Management (4 year Integrated Masters) <sup>+</sup> (C)

## Postgraduate

MSc Professional Accounting (C)

MSc Accounting and Finance (C)

MSc Accounting and Financial Management (C)

MRes Accounting (C)

MSc Corporate and Investment Banking (C)

MSc Corporate Sustainability (C)

MSc Finance (C)

MSc Financial Data Analytics (C)

MSc Finance and Investment (C)

MSc Finance and Management (C)

MSc Financial Engineering and Risk Management (C)

MRes Finance (C)

MSc Financial Technology (Finance) (C)

The Essex MBA (C)

MSc International Business and Entrepreneurship (S) (January entry available)

MSc Entrepreneurship and Innovation (S) (January entry available)

MSc International Logistics and Supply Chain Management (S) (January entry available)

MBM Master of Business Management (S) (January entry available)

MSc Business Analytics (S) (January entry available)

MSc Global Project Management (S) (January entry available)

MSc Human Resource Management (C)

MSc Organisational Change Management (C)

MSc Management Research (C)

MSc Management (C)

MSc Management (International) (C)

MSc Management (Marketing) (C)

## Key (Available course options)

C	S	L	+	*
Colchester Campus	Southend Campus	Loughton Campus	This course has an optional year abroad variant	This course has an optional placement year variant

## FIND OUT MORE



## Postgraduate

MSc Marketing (C)

MSc Management (Social Economy) (C)

MSc Digital Marketing and Analytics (C)

MSc International Marketing and Business Intelligence (S) (January entry available)

MSD, PhD Accounting (C)

MSD, PhD Finance (C)

MSD, PhD Business Administration (S)

MPhil, PhD Human Resource Management and Organisation Studies (C)

MSD, MPhil, PhD Management (C)

PhD Business Analytics (S)

PhD Entrepreneurship (S)

(Integrated) PhD Entrepreneurship

(Integrated) PhD Business Administration

(Integrated) PhD Management Studies

### Tuition fees:

■ Undergraduate: £22,600

■ Masters: £24,675

■ MBA: TBC

■ Research: £20,625

[essex.ac.uk/ebs](http://essex.ac.uk/ebs)

## Health and social care

- Gain real experience through work placements and research
- We have strong partnerships with local health authorities

## Undergraduate

BSc Nursing (Adult) +

BSc Nursing (Mental Health) +

BSc Occupational Therapy

BA Social Work

BSc Speech and Language Therapy

MSci Nursing (Dual Award in Adult and Mental Health – 4 year Integrated Masters)+

CertHE Health and Social Care

## Postgraduate

MSc Global Public Health (January entry available)

MSc Leadership in Health and Care

MSc Occupational Therapy (pre-registration)

MA Social Work (two-year programme)

MSc Speech and Language Therapy (pre-registration)

MSD, MPhil, PhD Public Health

## Postgraduate

MSD, MPhil, PhD Nursing Studies

MPhil, PhD Health and Organisational Research

(Integrated) PhD Health Studies

MSD, MPhil, PhD Occupational Therapy

MSD, MPhil, PhD Social Policy

MSD, MPhil, PhD Social Work

MPhil, PhD Speech and Language Therapy

MPhil, PhD Applied Psychology

Doctorate Clinical Psychology

### Entry requirements

Please see our website for requirements. An on-campus or online interview is required.

### Tuition fees:

- Undergraduate: Please check our website
- Masters: £23,875
- Research: £20,625

[essex.ac.uk/departments/health-and-social-care](https://essex.ac.uk/departments/health-and-social-care)

## Languages and linguistics

- We're in the top 200 for linguistics in the QS World University Rankings by Subject 2025

## Undergraduate

BA English Language and Linguistics <sup>+</sup>

BA English Language and Literature <sup>+</sup>

BA Linguistics <sup>+</sup>

BA Teaching English as a Foreign Language <sup>+</sup>

BA Computational Linguistics <sup>+</sup>

BA Language Studies and Linguistics

BA Language Studies with Latin American Studies

BA International Relations and Modern Languages <sup>+</sup>

BA Journalism and Language Studies

BA Modern Languages

BA Modern Languages and English Language

BA Modern Languages and Linguistics

BA Modern Languages and Teaching English as a Foreign Language

BA Modern Languages Translation, Interpreting and Cultural Mediation

MLing English Language and Linguistics (4 year Integrated Masters) <sup>+</sup>

## Postgraduate

MA Applied Linguistics (January start available)

MA Advanced Interpreting with Specialised Translation (Chinese-English)

MA Chinese-English Translation and Professional Practice

MA Conference Interpreting and Translation (Chinese-English)

MA, MRes Linguistics

MA Psycholinguistics

MA Teaching English to Speakers of Other Languages (TESOL) (January start available)

MA Audiovisual and Literary Translation

MA Translation, Interpreting and Subtitling

MA Translation and Professional Practice

PhD Applied Linguistics

PhD English Language Teaching

PhD Languages and Cultures

PhD Linguistics

PhD Psycholinguistics/Sociolinguistics

PhD Translation Studies (Translation, Interpreting and Subtitling)

Most Modern Language courses are four years including year abroad

### Tuition fees:

- Undergraduate: £21,500
- Masters: £23,875
- Research: £20,625

[essex.ac.uk/linguistics](http://essex.ac.uk/linguistics)

## Key (Available course options)

C	S	L	+	*
Colchester Campus	Southend Campus	Loughton Campus	This course has an optional year abroad variant	This course has an optional placement year variant

## FIND OUT MORE



# Law and human rights

- Gain practical experience with our Essex Law Clinic and Human Rights Clinic
- We're ranked 87th for Law in the THE World University Rankings by Subject 2025

## Undergraduate

LLB Law <sup>+</sup>\*

LLB Law (Senior Status)

LLB Law with Business <sup>+</sup>\*

LLB Law with Criminology <sup>+</sup>\*

LLB Law with Human Rights <sup>+</sup>\*

LLB Law with Philosophy <sup>+</sup>\*

Licence English and French Law (Double Degree) – including one year studying in France

## Postgraduate

MA Theory and Practice of Human Rights

LLM Economic, Social and Cultural Rights

LLM International Law (January entry available)

LLM International Criminal Law

LLM International Human Rights Law

LLM International Humanitarian Law

LLM International Human Rights and Economic Law

LLM Corporate Responsibility and Business Law

LLM International Commercial and Business Law (January entry available)

LLM International Commercial and Business Law with Professional Placement

LLM International Trade Law

LLM International Trade and Maritime Law

LLM International Trade and Maritime Law with Professional Placement

LLM Law and Technology

LLM Law, Environment and Sustainability

LLM Maritime Law

PhD Human Rights

MPhil, PhD Law

### Tuition fees:

- Undergraduate: £22,600
- Masters: £23,875
- Research: £20,625

[essex.ac.uk/law](http://essex.ac.uk/law)

# Life sciences

- Enjoy first-class lab facilities in our STEM building
- We're ranked 7th in the UK for Biology (Guardian University Guide 2025)

## Undergraduate

BSc Biological Sciences <sup>+</sup>\*

BSc Biochemistry <sup>+</sup>\*

BSc Ecology and Environmental Biology <sup>+</sup>\*

BSc Biotechnology <sup>+</sup>\*

BSc Biomedical Science <sup>+</sup>\*

BSc Genetics <sup>+</sup>\*

BSc Global Sustainability <sup>+</sup>\*

BSc Human Biology <sup>+</sup>\*

BSc Marine Biology <sup>+</sup>\*

BSc Microbiology <sup>+</sup>\*

MSci Biochemistry and Biotechnology (4 year Integrated Masters) <sup>+</sup>\*

MSci Biomedical Science (4 year Integrated Masters) <sup>+</sup>\*

MSci Tropical Marine Biology (4 year Integrated Masters) <sup>+</sup>\*

## Key (Available course options)

<b>C</b>	<b>S</b>	<b>L</b>	<b>+</b>	<b>*</b>
Colchester Campus	Southend Campus	Loughton Campus	This course has an optional year abroad variant	This course has an optional placement year variant

## FIND OUT MORE



## Postgraduate

MSc Biotechnology (January entry available)

MSc Cancer Biology (January entry available)

MSc Health Genomics

MSc Marine Science and Sustainable Development

MSc Molecular Medicine (January entry available)

MSc Tropical Marine Biology

MSD, PhD Biochemistry

MSD, PhD Biological Sciences

MSD, PhD Cell and Molecular Biology

MSD, PhD Marine Biology

MSD, MPhil, PhD Microbiology

MSD, MPhil, PhD Molecular Medicine

MSD, PhD Cancer Biology

MSD, PhD Plant Biology

(Integrated) PhD Tropical Marine Biology

### Tuition fees:

- Undergraduate: £24,360
- Masters: £23,875, MSc Marine Biology £24,675
- Research: £23,625

[essex.ac.uk/department/life-sciences](https://essex.ac.uk/department/life-sciences)

## Literature, film, and theatre studies

- We're ranked 8th in the UK for Drama and Dance (Guardian University Guide 2025)
- Students have access to our dedicated film screening and editing facilities and media centre

## Undergraduate

BA Creative Writing <sup>+</sup>

BA Drama <sup>+</sup>

BA Drama and Creative Writing <sup>+</sup>

BA Drama and Literature <sup>+</sup>

BA English Literature <sup>+</sup>

## Key (Available course options)

C	S	L	+	*
Colchester Campus	Southend Campus	Loughton Campus	This course has an optional year abroad variant	This course has an optional placement year variant

## FIND OUT MORE



## Undergraduate

BA English and Comparative Literature +\*

BA Film and Creative Writing +\*

BA Film Studies +\*

BA Film and Drama +\*

BA Film Studies and Literature +\*

BA Film and Journalism +\*

BA Journalism and Politics +\*

BA Journalism with Human Rights +\*

BA Journalism and Criminology +\*

BA Multimedia Journalism +\*

BA Literature and Creative Writing +\*

MLitSt Literature (4 year Integrated Masters)

MLitSt Creative Writing (4 year Integrated Masters)

MLitSt Literature and Creative Writing (4 year Integrated Masters)

## Postgraduate

MA Literature

MA Film and Literature

MA Film Studies

MA Creative Writing

MA Literature and Creative Writing

MA Scriptwriting (Theatre and Digital Media)

MA Wild Writing: Literature, Landscape and the Environment

MA International Journalism

MAD, MPhil, PhD Creative Writing

MAD, MPhil, PhD Film Studies

MPhil, PhD Film Studies (Creative Practice)

MAD, MPhil, PhD Journalism

MAD, MPhil, PhD Literature

MPhil, PhD Theatre Studies (Playwriting)

MAD, MPhil, PhD Theatre Studies

### Tuition fees:

- Undergraduate: £21,500
- Masters: £23,875
- Research: £20,625

[essex.ac.uk/lifts](http://essex.ac.uk/lifts)

# Mathematics, Statistics and Actuarial Science

- BA Actuarial Science offers exemptions from all eight IFA examinations

## Undergraduate

BSc Actuarial Science <sup>+</sup>\*

BSc Data Science and Analytics <sup>+</sup>\*

BSc Economics and Mathematics <sup>+</sup>\*

BSc Finance and Mathematics <sup>+</sup>\*

BSc Mathematics <sup>+</sup>\*

BSc Statistics <sup>+</sup>\*

BSc Mathematics with Computing <sup>+</sup>\*

BSc Mathematics with Physics <sup>+</sup>\*

MSci Actuarial Science and Data Science (4 year Integrated Masters)

MSci Mathematics and Data Science (4 year Integrated Masters)

MMath Mathematics (4 year Integrated Masters)

## Postgraduate

MSc Actuarial Science

MSc Applied Data Science (January entry available)

MSc Data Science (January entry available)

MSc Data Science with Professional Placement (January entry available)

MSc Data Science and its Applications (January entry available)

MSc Mathematics

MSc Mathematics and Finance

MSc Statistics

MSc Optimisation and Data Analytics

Postgraduate Diploma Actuarial Science

Postgraduate Diploma Mathematics

Postgraduate Diploma Mathematics and Finance

## Key (Available course options)

C	S	L	+	*
Colchester Campus	Southend Campus	Loughton Campus	This course has an optional year abroad variant	This course has an optional placement year variant

## FIND OUT MORE



## Postgraduate

Postgraduate Diploma Optimisation and Data Analytics

MSD, MPhil, PhD Applied Mathematics

PhD Bioinformatics

MSD, MPhil, PhD Mathematical Biology

MSD, MPhil, PhD Mathematics

MSD, MPhil, PhD Operational Research

MSD, MPhil, PhD Pure Mathematics

MSD, MPhil, PhD Statistics

PhD Mathematics Education

PhD Actuarial Science

MSD, MPhil Bio-Statistics

MPhil, PhD Data Science

(Integrated) PhD Actuarial Science

(Integrated) PhD Data Science

(Integrated) PhD Mathematics

(Integrated) PhD Operational Research

(Integrated) PhD Statistics

### Tuition fees:

- Undergraduate: £22,600
- Masters: £23,875
- Research: £20,625

[essex.ac.uk/subjects/mathematics](https://www.essex.ac.uk/subjects/mathematics)

# Philosophical, Historical, and Interdisciplinary Studies

■ Ranked top 150 for Philosophy in the QS World University Rankings by Subject (2025)

## Undergraduate

BA Art History <sup>+</sup>\*

BA Art History, Heritage and Museum Studies <sup>+</sup>\*

BA Art History, Visual Culture and Media Studies<sup>+</sup>\*

BA Art History and/with Language Studies

BA European Studies with Spanish

BA Liberal Arts <sup>+</sup>\*

BA Global Studies <sup>+</sup>\*

BA Global Studies with Business Management <sup>+</sup>\*

BA Global Studies with Human Rights <sup>+</sup>\*

BA Global Studies with Politics <sup>+</sup>\*

BA Global Studies with Sustainability <sup>+</sup>\*

BA Urban Sustainability Studies

BA Curating <sup>+</sup>\*

BA Curating, Heritage and Human Rights <sup>+</sup>\*

BA Curating with History <sup>+</sup>\*

BA Curating with Politics <sup>+</sup>\*

BA Continental Philosophy

BA Philosophy <sup>+</sup>\*

BA Philosophy, Ethics and Sustainability <sup>+</sup>\*

BA Philosophy, Religion and Ethics <sup>+</sup>\*

BA Philosophy with Business Management <sup>+</sup>\*

BA Philosophy and Law <sup>+</sup>\*

BA Philosophy and Literature <sup>+</sup>\*

BA Philosophy and Politics <sup>+</sup>\*

BA Philosophy with Human Rights <sup>+</sup>\*

BA Social Change <sup>+</sup>\*

MArth Art History (4 year Integrated Masters) <sup>+</sup>\*

MPhilos Philosophy (4 year Integrated Masters) <sup>+</sup>\*

BA History <sup>+</sup>\*

BA History and Heritage <sup>+</sup>\*

BA History and Law <sup>+</sup>\*

BA History with Film Studies <sup>+</sup>\*

BA History and Literature <sup>+</sup>\*

BA History with Human Rights <sup>+</sup>\*

BA Modern History <sup>+</sup>\*

## Undergraduate

BA Modern History and International Relations <sup>+</sup>\*

BA Modern History and Politics <sup>+</sup>\*

BA History and Sociology <sup>+</sup>

MHist History (4 year Integrated Masters) <sup>+</sup>\*

## Postgraduate

MA Art History and Theory

MA Curating

MA Curating with Professional Placement

MA Heritage and Museum Studies

Graduate Diploma in Art History and Theory

Graduate Diploma in Philosophy

MA Philosophy (Philosophy and Art History pathway)

MA Philosophy (Continental Philosophy pathway)

MA Philosophy (Critical Social Theory pathway)

MA Social and Political Thought

MA Western Marxism (January entry available)

MA Western Marxism and Translation

MAD, MPhil, PhD Art History and Theory

MAD, PhD Philosophy

MA History, Power and Identity

MA War, Culture and Society

Postgraduate Certificate in History

MAD, MPhil, PhD History

PhD Heritage and Museum Studies

PhD Heritage and Museum Studies (Practice as Research)

### Tuition fees:

- Undergraduate: £21,500
- Masters: £23,875
- Research: £20,625

[essex.ac.uk/departments/philosophical-historical-and-interdisciplinary-studies](https://essex.ac.uk/departments/philosophical-historical-and-interdisciplinary-studies)

## Key (Available course options)

C	S	L	+	*
Colchester Campus	Southend Campus	Loughton Campus	This course has an optional year abroad variant	This course has an optional placement year variant

## FIND OUT MORE



# Politics and international relations

- We're in the top 50 globally and top 20 in the UK for politics and international studies in the QS World University Rankings by Subject (2025)

## Undergraduate

BA Politics <sup>+</sup>\*

BA Politics and International Relations <sup>+</sup>\*

BA International Relations <sup>+</sup>\*

BA Philosophy, Politics and Economics <sup>+</sup>\*

BSc Economics and Politics <sup>+</sup>\*

MPol International Relations (4 year Integrated Masters) <sup>+</sup>\*

MPol Politics and International Relations (4 year Integrated Masters) <sup>+</sup>\*

## Postgraduate

MA Politics (January entry available)

MA, MSc Conflict Resolution

MA, MSc Environmental Futures with Climate Change

MA, MSc Global and Comparative Politics

MA Ideology and Discourse Analysis

MA, MSc, MRes International Relations

MA, MSc, MRes Political Economy

MA Political Psychology

MA, MSc, MRes Political Science

MA Political Theory

MSc Politics, Communications and Data Analytics

The Essex MPP (Master of Public Policy) (January entry available)

MSc Social Data Science

Graduate Diploma Politics

MPhil, PhD Government

### Tuition fees:

- Undergraduate: £22,600
- Masters: £23,875
- Research: £20,625

[essex.ac.uk/government](https://essex.ac.uk/government)

## Key (Available course options)

C	S	L	+	*
Colchester Campus	Southend Campus	Loughton Campus	This course has an optional year abroad variant	This course has an optional placement year variant

## FIND OUT MORE



# Psychology

- Exceptional research labs and facilities, including our Centre for Brain Science
- Courses accredited by the British Psychological Society

## Undergraduate

BA, BSc Psychology +\*

---

BSc Psychology with Cognitive Neuroscience +\*

---

BSc Psychology with Economics +\*

## Postgraduate

MSc Psychology (conversion course) (January entry available)

---

MSc Research Methods in Psychology

---

MSc Cognitive Neuroscience and Neuropsychology

---

MSD, PhD Psychology

---

(Integrated) PhD Psychology

---

(Integrated) PhD Psychology with Cognitive Neuroscience and Neuropsychology

### Tuition fees:

- Undergraduate: £24,360
- Masters: £23,875
- Research: £23,625

[essex.ac.uk/psychology](http://essex.ac.uk/psychology)

# Psychosocial and psychoanalytic studies

- We've got strong links with the local National Health Service, education and care services and professional institutions

## Undergraduate

FdA, BA Therapeutic Communication and Therapeutic Organisations +

BA Psychosocial and Psychoanalytic Studies +\*

BA Psychodynamic Practice +\*

BA Childhood Studies +\*

## Postgraduate

MA Childhood Studies

MA Gender and Sexuality Studies

MA Psychoanalytic Studies

MA Jungian and post-Jungian Studies (Also available by distance learning)

MA Refugee Care (Also available by distance learning)

PG Diploma, MA Management and Organisational Dynamics

Graduate Diploma in Psychodynamic Approaches

PhD Psychoanalytic Studies

PhD Childhood Studies

PhD Psychosocial Studies

PhD Refugee Care

### Tuition fees:

- Undergraduate: £21,500
- Masters: £23,875
- Research: £20,625

[essex.ac.uk/cps](http://essex.ac.uk/cps)

## Key (Available course options)

C	S	L	+	*
Colchester Campus	Southend Campus	Loughton Campus	This course has an optional year abroad variant	This course has an optional placement year variant

## FIND OUT MORE



# Sociology and criminology

- We're ranked top 75 for Sociology in the QS World University Rankings by Subject 2025

## Undergraduate

BA Criminology <sup>+</sup>\*

BA Criminology with Counselling Skills <sup>+</sup>\*

BA Criminology with Criminal Law <sup>+</sup>\*

BA Criminology with Social Psychology <sup>+</sup>\*

BA Media and Digital Culture <sup>+</sup>\*

BA Sociology <sup>+</sup>\*

BA Sociology and Criminology <sup>+</sup>\*

BSc Sociology with Data Science <sup>+</sup>\*

BA Sociology with Social Psychology <sup>+</sup>\*

BA Social Sciences <sup>+</sup>\*

## Postgraduate

MA Advertising, Marketing and the Media

MA Criminology

MA, MSc Migration Studies

MA Sociological Research Methods

MA Policing

MSc Policing and Data Analytics

MA, MAD Sociology

MSc Survey Methods for Social Research

MA, MSc Organised Crime, Terrorism and Security

MA Sociology and Criminology

MPhil, PhD Criminology

MPhil, PhD Sociology

MPhil, PhD Survey Methodology

### Tuition fees:

- Undergraduate: £21,500
- Masters: £23,875
- Research: £20,625

[essex.ac.uk/sociology](https://www.essex.ac.uk/sociology)

# Sports, rehabilitation and exercise sciences

- Work with elite athletes and gain experience in our renowned Human Performance Unit

## Undergraduate

BSc Physiotherapy

BSc Psychology of Sport and Exercise +\*

BSc Sports and Exercise Science +\*

BSc Sport Coaching +\*

BSc Sports Therapy +\*

MSc Sports and Exercise Science +\* (4 year Integrated Masters)

## Postgraduate

MSc Physiotherapy (Pre-Registration)

MSc Sport and Exercise Psychology

MSc Sport and Exercise Science

MSc Strength and Conditioning

MPhil, PhD Physiotherapy

MPhil, PhD Musculoskeletal Practice

MSD, MPhil, PhD Sport and Exercise Science

MSD, MPhil, PhD Sport and Exercise Psychology

MSD, MPhil, PhD Health and Exercise Sciences

MSD, MPhil, PhD Health and Physical Activity

MSD, MPhil, PhD Sports Therapy

### Tuition fees:

- Undergraduate: £22,600
- Masters: £23,875
- Research: £23,625

[essex.ac.uk/sres](http://essex.ac.uk/sres)

## Key (Available course options)

C	S	L	+	*
Colchester Campus	Southend Campus	Loughton Campus	This course has an optional year abroad variant	This course has an optional placement year variant

## FIND OUT MORE



# Pathway programmes at University of Essex International College

The University of Essex International College, a partnership between the University of Essex and Kaplan International Pathways, provides pathway courses that can prepare you for your degree study.

## Undergraduate

### Foundation Certificate

- Humanities
- Science and Health
- Social Sciences

### International Year One

- Business
- Economics
- Law
- Life Sciences
- Politics and International Relations
- Psychology
- International Year One Plus in Business (with additional language and academic preparation)

## Postgraduate

### Pre-masters

- Humanities
- Science and Health
- Social Sciences

For further information about these courses and to apply please visit [kaplanpathways.com/colleges/university-essex-international-college](https://kaplanpathways.com/colleges/university-essex-international-college)

## Pre-sessional English language courses

We offer pre-sessional English language courses which can be taken before your degree if you are an international student and do not meet our English language entry requirements. Our courses will help you improve your English.

Upon successful completion of the pre-sessional course you will be able to proceed on to your degree course without having to retake IELTS. Our pre-sessional courses are delivered at The University of Essex International College (in partnership with Kaplan).

To find out more about our pre-sessional courses please visit [essex.ac.uk/international/pre-sessional](https://essex.ac.uk/international/pre-sessional)

## Integrated PhD with research and communication skills

These tailor-made research degrees are available in a range of subject areas and are designed for international students with added research, communication and academic skills built into the programmes.

[essex.ac.uk/postgraduate/research/integrated-phds](https://essex.ac.uk/postgraduate/research/integrated-phds)

## Study abroad

We offer opportunities for students to join us for a period of study abroad, either for a full year or part year. To find out more and to apply please visit [essex.ac.uk/study-abroad](https://essex.ac.uk/study-abroad)

# IMPORTANT INFORMATION

## About this prospectus

---

### When we might make changes to advertised courses and other information

This prospectus tries to answer your questions about life and academic provision on offer at the University of Essex. It was prepared in 2025 and refers to courses which will be available in October 2026 and January 2027. The University makes every effort to ensure the prospectus is accurate at the time it is printed. Exceptionally, it can be necessary to make changes, for example to courses, facilities or fees due to legitimate staffing, financial, regulatory or academic reasons. Examples of such reasons might include a change of law or regulatory requirements, industrial action, lack of demand, departure of key personnel, change in government policy, or withdrawal or reduction of funding. Changes to courses may for example consist of variations to the content and method of delivery of programmes, courses and other services, to discontinue programmes, courses and other services and to merge or combine programmes or courses. If a course change or closure is proposed in such circumstances the University will take all reasonable steps to minimise disruption to students. This will include informing students of the changes in advance and giving them appropriate opportunity to comment on the proposals.

A course would only be closed in exceptional circumstances. If it is ever necessary to close a course the University's preferred approach would be to continue to teach current students on that course until they have completed their studies. If exceptionally that is not possible, the University will explore other options with the affected students for example by considering whether those students can be offered places on alternative courses, or whether their studies can be completed at another institution.

[essex.ac.uk/subjects](https://www.essex.ac.uk/subjects)  
[essex.ac.uk/fees](https://www.essex.ac.uk/fees)

### No liability for matters outside our control

The University cannot be held responsible for failure/delay in performing obligations caused by things beyond its reasonable control, such as fire, flood or industrial action.

### University terms and conditions, procedures, rules and regulations

Applicants are considered in line with the University's Admissions Policy and the Regulations relating to Admission (listed under Academic Regulations), which can be found online at:

[essex.ac.uk/undergraduate/  
applying-to-essex](https://www.essex.ac.uk/undergraduate/applying-to-essex)  
[essex.ac.uk/postgraduate/masters/  
applying-to-essex](https://www.essex.ac.uk/postgraduate/masters/applying-to-essex)

If your application to the University of Essex is successful, by accepting the offer you will be entering into a legal contract with us, subject to fulfilling any conditions included in your offer. Your rights and obligations to us and our rights and obligations to you will be detailed in the information that we provide once the offer has been made. Applicants and registered students must comply with the University's regulations, policies and procedures as part of their contract.

The full Procedures, Rules and Regulations of the University, governing how it operates, are set out in the Charter, Statutes and Ordinances and in the University Regulations, Policy and Procedures.  
[essex.ac.uk/governance-and-strategy/  
governance/regulations](https://www.essex.ac.uk/governance-and-strategy/governance/regulations)

## Quality assurance

---

The Quality Assurance Agency's Higher Education Review of the University in December 2014 covered every aspect of the University's provision and confirmed that the University had met all expectations and meets national requirements for standards and quality.

The University was commended for the strong focus on improving all areas of the student learning experience. The high-quality research environment and development opportunities offered to postgraduate research students were recognised, along with our commitment to listening and responding to student feedback, and to providing our students with opportunities to improve their employment skills and prospects.  
[qaa.ac.uk](https://www.qaa.ac.uk)

## Policy statement on equality and diversity

The University of Essex celebrates diversity, challenges inequality, and is committed to sustaining an inclusive and diverse community that is open to all who have the potential to benefit from membership of it. We ensure equality of opportunity for all its members. We expect staff, students and visitors to be treated, and to treat each other, with dignity and respect regardless of age, disability, gender reassignment, marriage and civil partnership, pregnancy and maternity, race, religion or belief, sex, sexual orientation, socio-economic background, political beliefs and affiliations, family circumstances or other irrelevant distinction.

## Tuition fee increases during your studies

For full-time undergraduate students and postgraduate students on courses with a duration of more than one year with an international fee status, tuition fees normally increase for each academic year of study. This annual increase will be 5% or the annual increase in the RPI-X index, whichever is the higher. [essex.ac.uk/fees](https://www.essex.ac.uk/fees)

## Photography

Every effort has been made to obtain permission to reproduce the images contained herein. We would like to thank the student contributors, photographers and Instagrammers who kindly granted us permission to use their content.

## Data for marketing purposes

Data has been selected for marketing purposes but all claims are based on the most recent data that were available at the time of print: QS World University Rankings by Subject results are based on 2025 data; Times Higher Education (THE) World University Rankings results are based on 2025 data; Times Good University Guide (TGUG) results are based on 2025 data. Guardian University Guide results are based on 2025 data; Complete University Guide results are based on 2026 data.

# GET IN TOUCH

### Colchester Campus

Wivenhoe Park  
Colchester CO4 3SQ  
United Kingdom  
T +44 (0)1206 873333

### Southend Campus

Elmer Approach  
Southend-on-Sea SS1 1LW  
United Kingdom  
T +44 (0)1702 328200

### Undergraduate admissions

E [admit@essex.ac.uk](mailto:admit@essex.ac.uk)

### Postgraduate admissions

E [pgadmit@essex.ac.uk](mailto:pgadmit@essex.ac.uk)

### Contact our regional offices:

#### Africa

E [africa@essex.ac.uk](mailto:africa@essex.ac.uk)

#### China

E [china@essex.ac.uk](mailto:china@essex.ac.uk)

#### India and subcontinent

E [india@essex.ac.uk](mailto:india@essex.ac.uk)

#### Middle East and North Africa

E [mena@essex.ac.uk](mailto:mena@essex.ac.uk)

#### South East Asia

E [SEAsia@essex.ac.uk](mailto:SEAsia@essex.ac.uk)

#### Americas

E [americas@essex.ac.uk](mailto:americas@essex.ac.uk)

#### Europe

E [europe@essex.ac.uk](mailto:europe@essex.ac.uk)

### Social media:

Don't forget to follow us on all the main social channels to keep up-to-date with all the latest news at Essex. Feel free to private message us on social media channels too and we'll get back to you.



[/uniessex](#)



[/uniofessex](#)



[/uniofessex](#)



[/Uni\\_of\\_Essex](#)



[/uniessex](#)

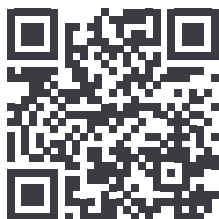


[/uniofessex](#)



[/school/university-of-essex](#)

AT **ESSEX** WE **NURTURE THINKERS** AND **DOERS** WHO **MAKE CHANGE HAPPEN**. WE'RE ON THE SIDE OF PEOPLE WITH GUTS – REBELS WITH A CAUSE. WE **ENCOURAGE** PEOPLE TO LEARN HOW BUT **CHALLENGE** WHY. WE'LL **HELP** YOU EXPLORE, **QUESTION**, AND **CREATE** POWERFUL IDEAS, AND YOU'LL GAIN THE **CONFIDENCE** TO SHARE THEM. BECOMING **BOLD** ENOUGH TO TACKLE **INEQUALITY** AND CHANGE THE STATUS QUO. TO US IT DOESN'T MATTER WHERE YOU'VE COME FROM. WE'RE **INTERESTED** IN HOW **YOU** WANT TO **GROW** AND WHAT **YOU** WANT TO **CHANGE**. AT **ESSEX** YOU'LL **DISCOVER** WHO YOU WANT TO BE AND WHAT YOUR **FUTURE** HOLDS. YOU'LL HAVE THE SPACE TO **THINK, LEARN, LISTEN, AND DEBATE**. WE'LL INTRODUCE YOU TO PEOPLE FROM EVERY CORNER OF THE PLANET. WHERE YOU'LL BE A **MEMBER** OF OUR **GLOBAL COMMUNITY** THAT LIVES, WORKS AND PLAYS TOGETHER. **WE ARE ESSEX – WHERE CHANGE HAPPENS.**



## Find out more

Visit our international webpages to find essential information for international students.